

## Accumulator Manufacturing Guidelines |

## WE BUILD TO YOUR NEEDS

Let our expert staff engineer the right unit for your application. We will work with you to size the unit to API guidelines and build the unit to your requirements.

Meyer closing units are designed with service and reliability in mind: bottles and bladders are easily accessible and serviceable. Meyer's modular design allows for future expansion and addition bottles. If your specs change, we can help you adapt.

### Remote Options

- Push-button electric driller panel
- Pneumatic 4-way driller panel
- Push-button pneumatic drillers panel
- PLC Touch Screen

### Options

- Electric motor power: explosion-proof or industrial
- Diesel powered pumps: single and multiple pump configurations
- Remote panel: air, electric push button, PLC touch screen



### UPPER MANIFOLDS

2" manifold seamless with NO joints, threads or welds prevent leaks. Easy to replace and provides more support.



### MEYER AUTO START

Custom designed and manufactured by Meyer. Our auto start box shuts units down at 3,000 psi in hand-mode or auto-mode. Field tested, proven to be durable, reliable and industry recognized.



### STEEL BATTERY PROTECTION

Steel battery boxes provides protection from the elements, UV rays and direct impact.



### BELT DRIVE PUMP (not chain or gearbox)

Durable and long-lasting belt drives provide easy replacement in the field.



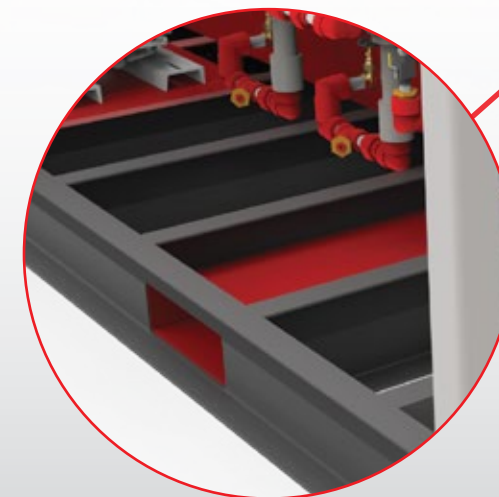
### LIFTING FRAME

Full-box tubing frame guards the unit from damage and allows for crane lifting on most models.



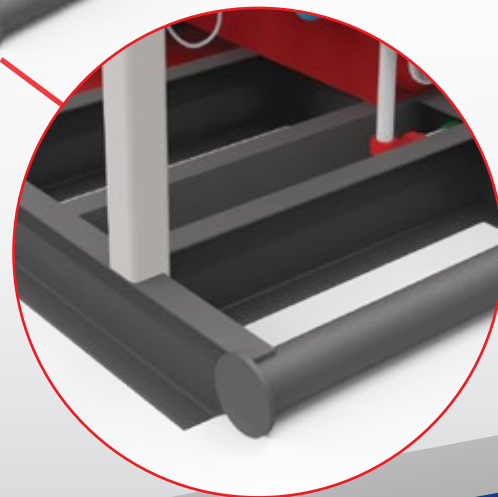
### SKID

Heavy Duty 8" channel frame with forklift pockets for safe lifting.



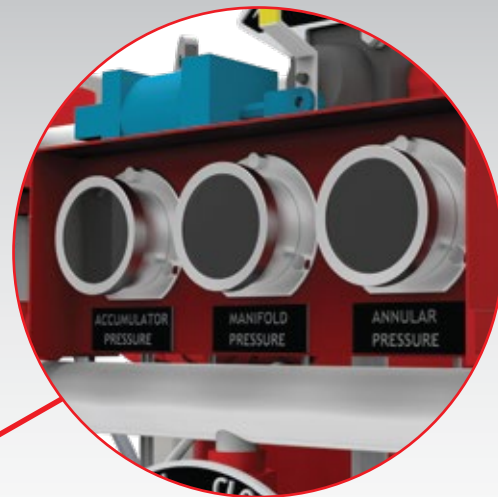
### WINCH LINES

Simplifies skid loading or sliding in place.



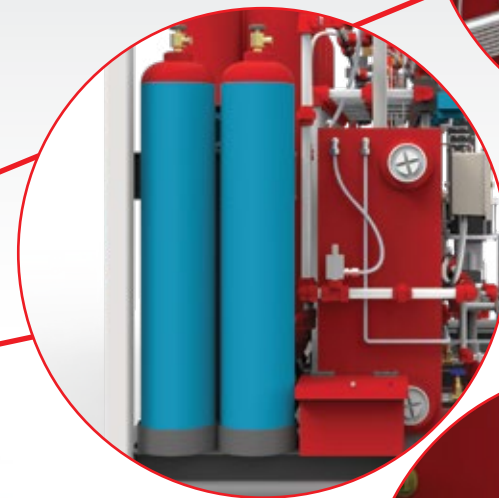
### GAUGE PANELS

Meyer developed gauge panels provide protection and allows for clear labeling.



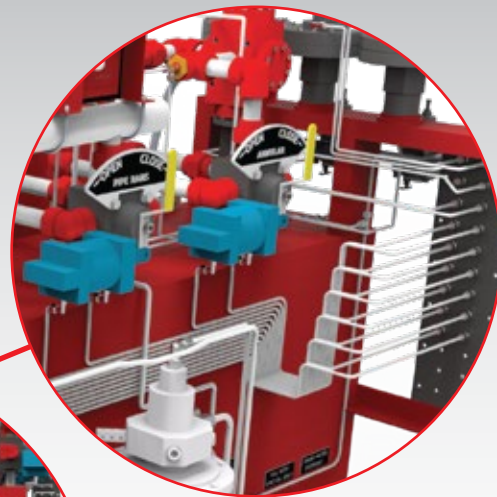
### NITROGEN BACKUP SYSTEM

Meyers API unit has nitrogen back-up system with mounted control valves. Assists operators in case of two-pump system failure.



### PROFESSIONAL INSTALLED STAINLESS TUBING

Provides long-lasting dependable tubing.



### VISIBLE LABELING

Engraved tags list functions of valves such as standard operating positions and operational and safety notes.



### AIR INTAKE

Meyers standard 1" piping with crows foot connections minimize restrictions.



6733 Leopard Street  
Corpus Christi, Texas 78409

Phone: (361) 289-2130

Fax: (361) 289-2138

Email: [info@MeyerNow.com](mailto:info@MeyerNow.com)

**MeyerNow.com**



16D-0046

